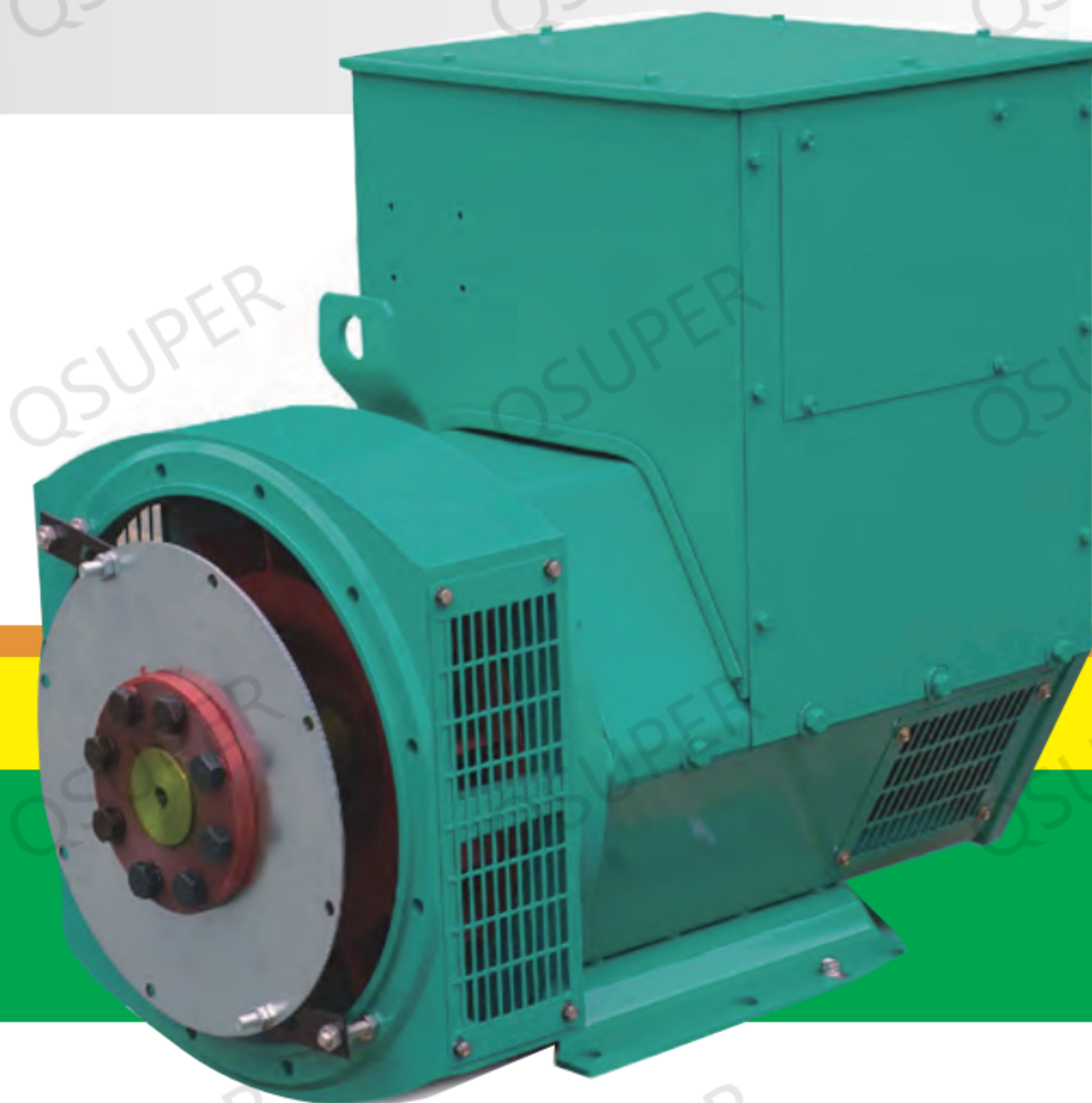


系列三相无刷同步发电机  
SERIES THREE-PHASE BRUSHLESS  
SYNCHRONOUS ALTERNATOR



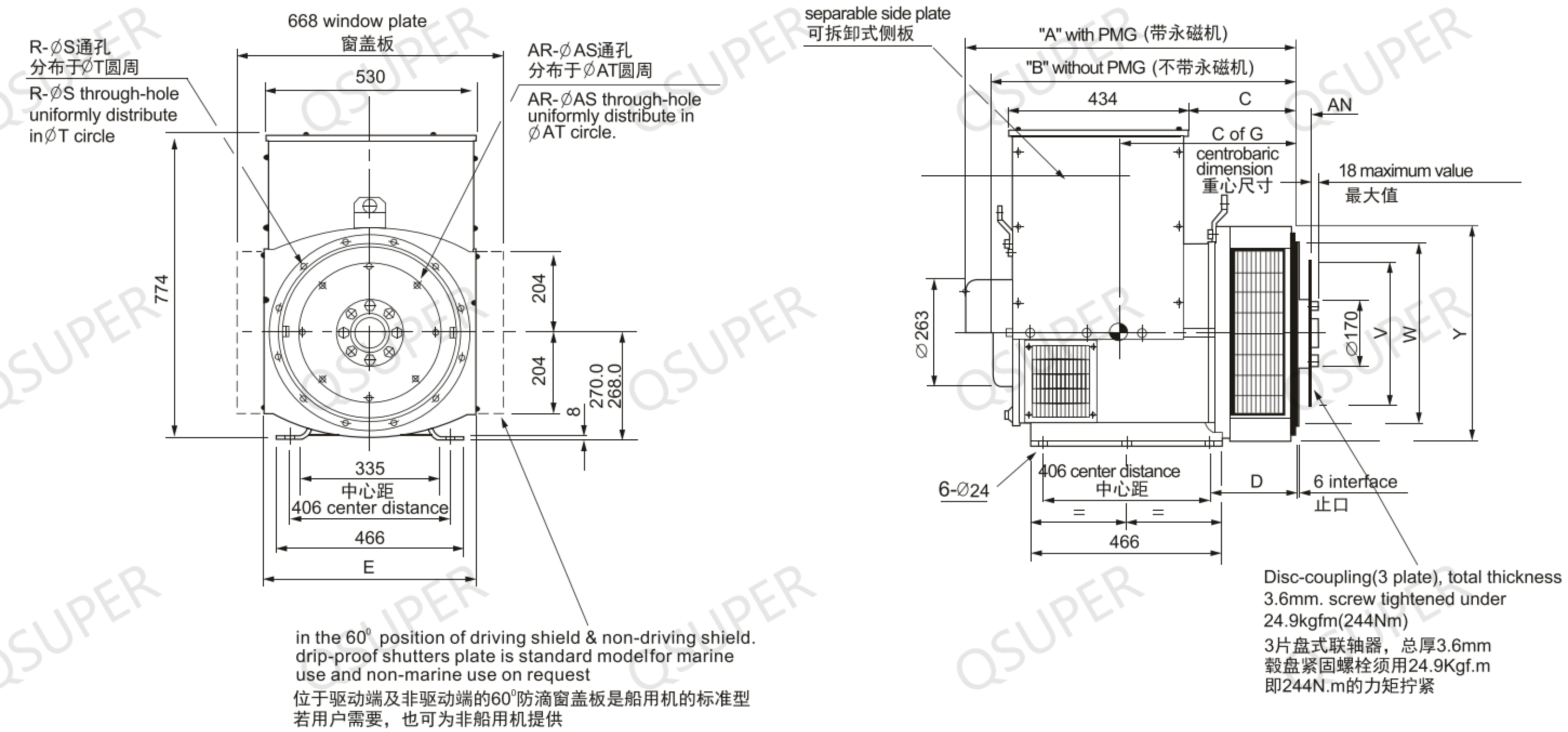
QS274  
TECHNICAL DATA SHEET

50Hz CLASS "H"

RATINGS	绕组形式 311 / 功率因数0.8 Winding 311 / 0.8 Power Factor													
	持续/125k/40°C Cont./125k/40°C				持续/125k/40°C Cont./125k/40°C				持续/125k/40°C Cont./125k/40°C					
定额/温升/环境温度 Duty / Temp Rise / Ambient T°	三相 3 PHASE								单相 1 PHASE					
相数 PHASE	三相 3 PHASE								单相 1 PHASE					
星形串联 SERIES STAR	380	400	415											
星形并联 PARALLEL STAR	190	200	208											
三角形串联 SERIES DELTA	220	230	240											
双三角形并联 DOUBLE DELTA				220	230	240								
	KVA	KW	KVA	KW	KVA	KW	KVA	KW	KVA	KW	KVA	KW	KVA	KW
QS274C	100	80	100	80	100	80	60	48	60	48	60	48	60	48
QS274D	114	91.2	120	96	114	91.2	68	54.4	68	54.4	68	54.4	68	54.4
QS274E	140	112	140	112	140	112	85	68	85	68	85	68	85	68
QS274F	160	128	160	128	160	128	96	76.8	96	76.8	96	76.8	96	76.8
QS274G	180	144	180	144	180	144	108	86.4	108	86.4	108	86.4	108	86.4
QS274H	200	160	200	160	200	160	120	96	120	96	120	96	120	96
QS274J	230	184	230	184	230	184	138	110.4	138	110.4	138	110.4	138	110.4
QS274K	250	200	250	200	250	200	150	120	150	120	150	120	150	120

60Hz CLASS "H"

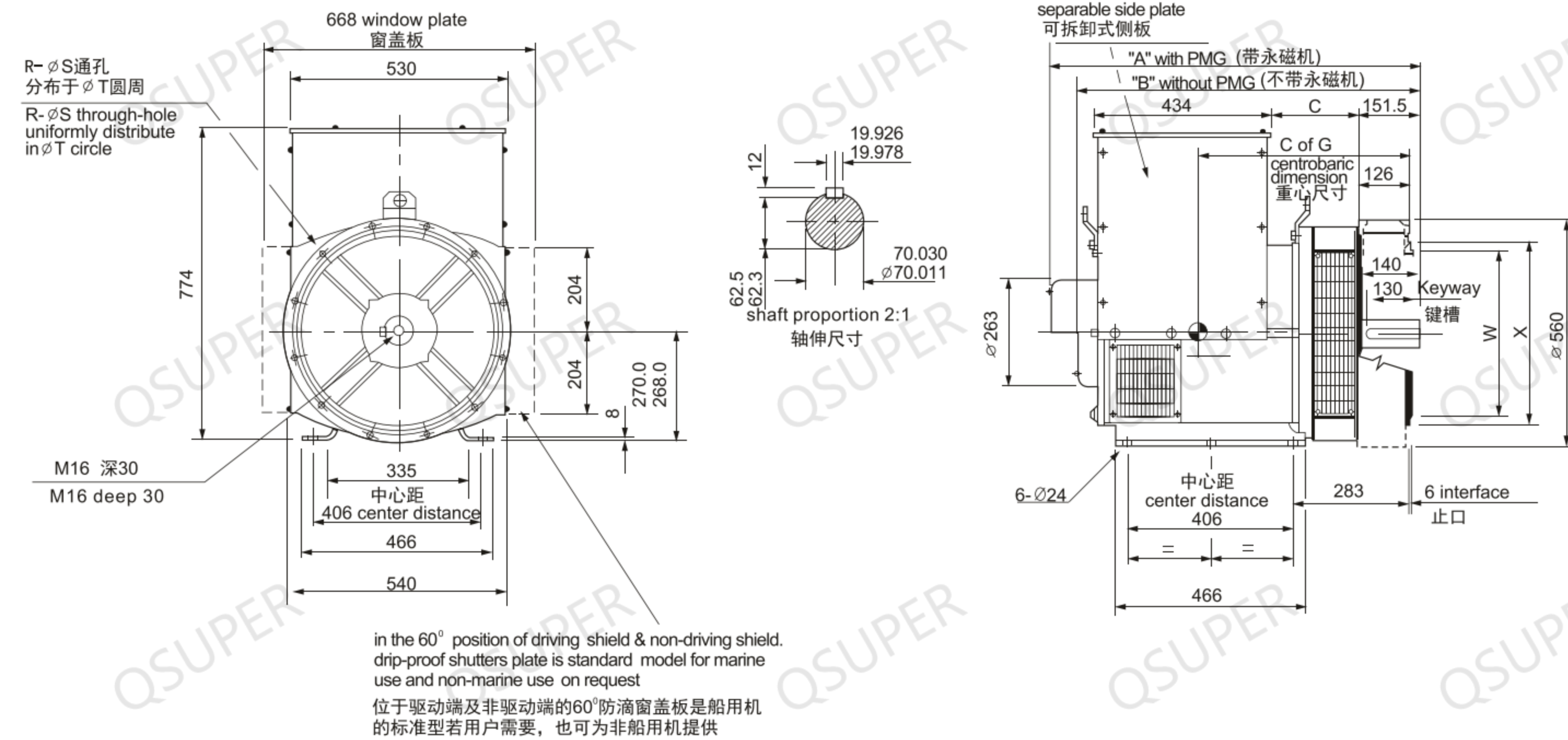
RATINGS	绕组形式 311 / 功率因数0.8 Winding 311 / 0.8 Power Factor													
	持续/125k/40°C Cont./125k/40°C				持续/125k/40°C Cont./125k/40°C				持续/125k/40°C Cont./125k/40°C					
定额/温升/环境温度 Duty / Temp Rise / Ambient T°	三相 3 PHASE								单相 1 PHASE					
相数 PHASE	三相 3 PHASE								单相 1 PHASE					
星形串联 SERIES STAR	416	440	460	480										
星形并联 PARALLEL STAR	208	220	230	240										
三角形串联 SERIES DELTA	240	254	266	277										
双三角形并联 DOUBLE DELTA					220	230	240							
	KVA	KW	KVA	KW	KVA	KW	KVA	KW	KVA	KW	KVA	KW	KVA	KW
QS274C	112.5	90	117.5	94	117.5	94	125	100	61.3	49	64.4	51.5	67.5	54
QS274D	131.3	105	137.5	110	137.5	110	146.3	117	72	57.6	75	60	78.8	63
QS274E	160	128	167.5	134	167.5	134	178.8	143	84	67.2	90	72	96	76.8
QS274F	181.3	145	190	152	190	152	206.3	165	97.5	78	103.1	82.5	108.8	87
QS274G	205	164.5	218.5	174.8	218.5	174.8	231.4	185.1	110.5	88.4	115.7	92.6	123.4	98.7
QS274H	237.5	190	245	196	245	196	255	204	127.5	102	135	108	142.5	114
QS274J	269	215.2	281	224.8	294	235.2	300	240	150	120	157	125.6	161	128.8
QS274K	291	232.8	299	239.2	312.5	250	312.5	250	155	124	166	132.8	175	140



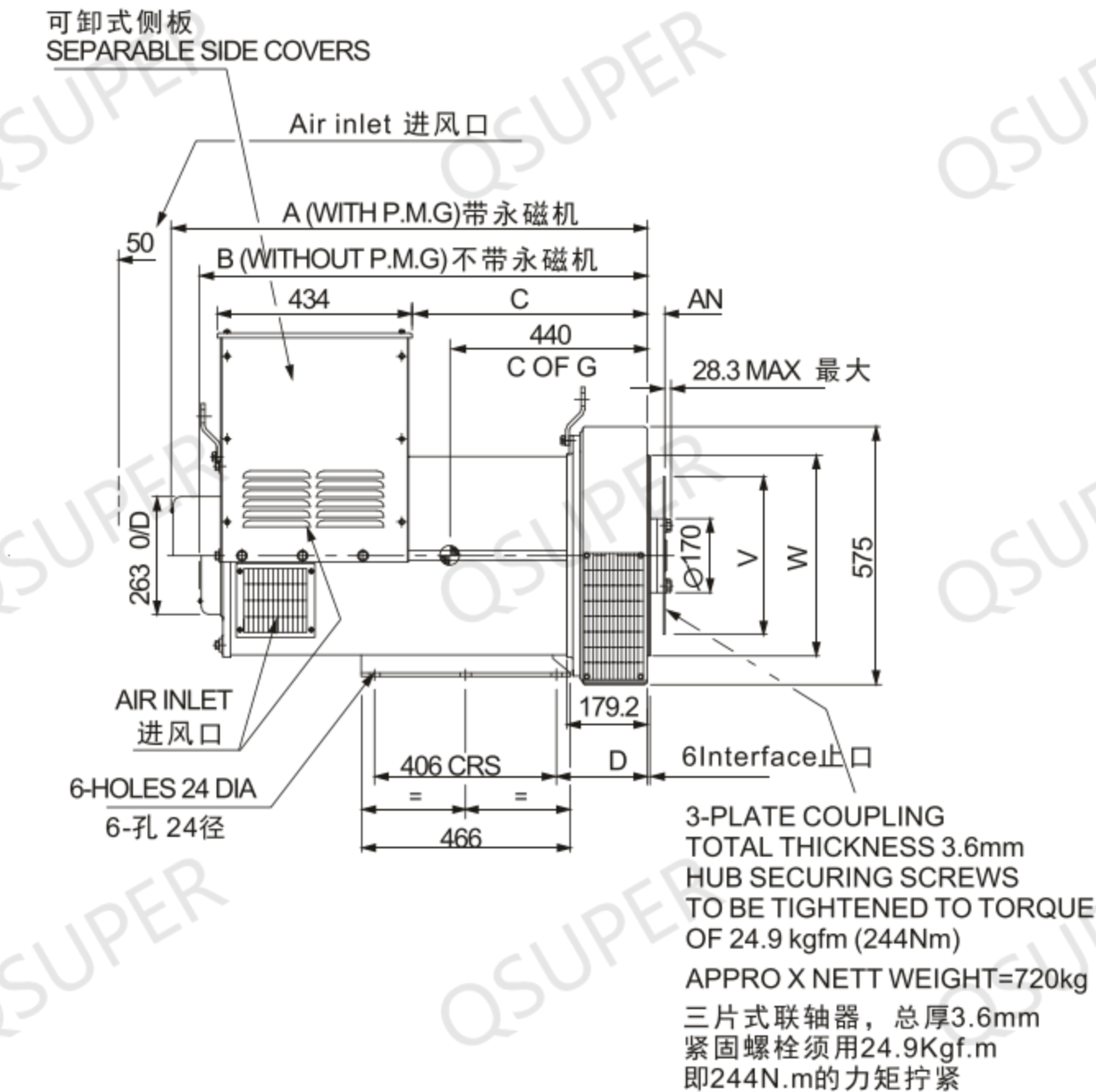
DIMENSION 尺寸(mm)							SHIPMENT DATA 运输数据		
型号 Model	A	B	C	E	C of G	N.W(kg)	G.W(kg)	LXWXH(mm)	
SAE1 QS274C	813.3	750.3	274.3	554	365	385	415	900X650X975	
SAE1 QS274D	813.3	750.3	274.3	554	375	405	435	900X650X975	
SAE1 QS274E	928.3	865.3	389.3	554	390	455	485	1020X650X975	
SAE1 QS274F	928.3	865.3	389.3	554	415	500	530	1020X650X975	
SAE1 QS274G	978.3	915.3	439.3	554	435	550	580	1080X650X975	
SAE1 QS274H	1018.3	955.3	479.3	554	455	600	630	1110X650X975	
SAE2&3 QS274C	799	736	260	544	398	385	415	900X650X975	
SAE2&3 QS274D	799	736	260	544	422	405	435	900X650X975	
SAE2&3 QS274E	914	851	375	544	489	455	485	1020X650X975	
SAE2&3 QS274F	914	851	375	544	527	500	530	1020X650X975	
SAE2&3 QS274G	964	904	425	544	579	550	580	1080X650X975	
SAE2&3 QS274H	1004	941	465	544	625	600	630	1110X650X975	

FLANGE 法兰式过渡接套 (mm)							
S.A.E.NO.	D	R	S	T	W	X	Y
1	216.3	12	12.7	530.2	511.1	553	580
2	202	12	11	466.7	447.6	490	530
3	202	12	11	428.6	409.5	451	530

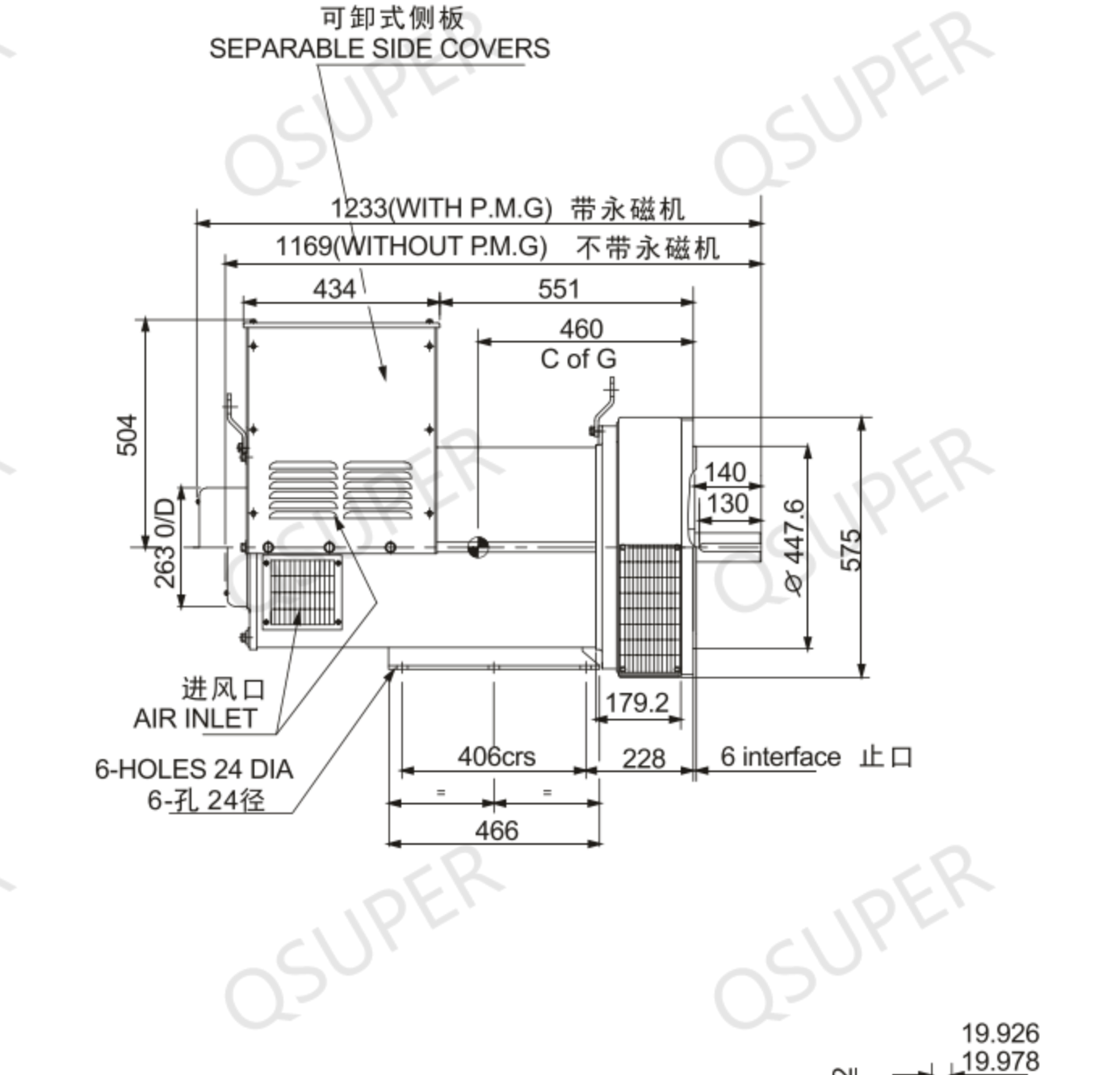
DISC COUPLING 盘片式联轴器 (mm)					
S.A.E.NO.	AN	AR	AS	AT	V
10	53.98	8	11	295.3	314.2
11.5	39.68	8	11	333.3	352.3
14	25.40	8	13.5	438.2	466.6



单轴承 SINGLE BEARING



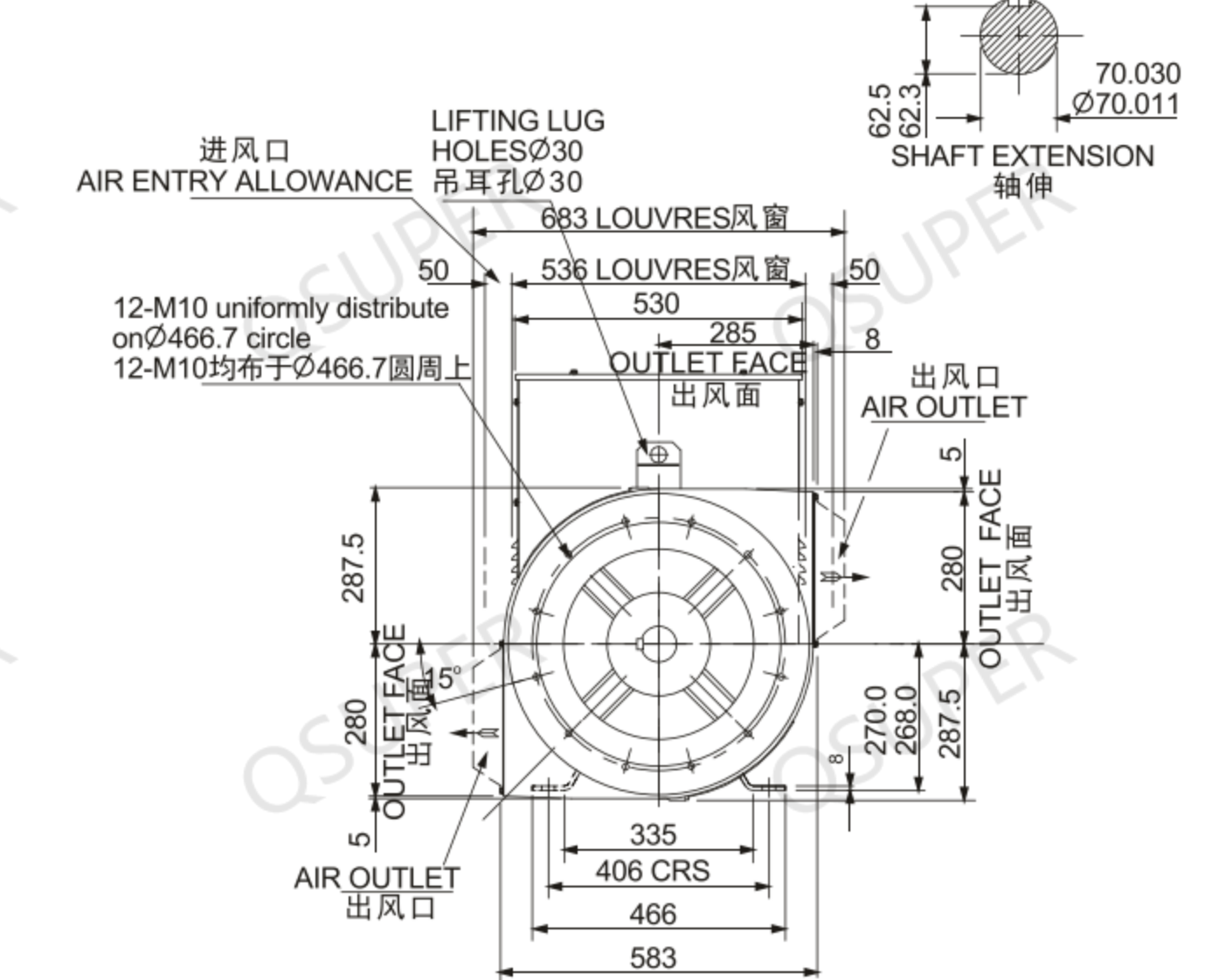
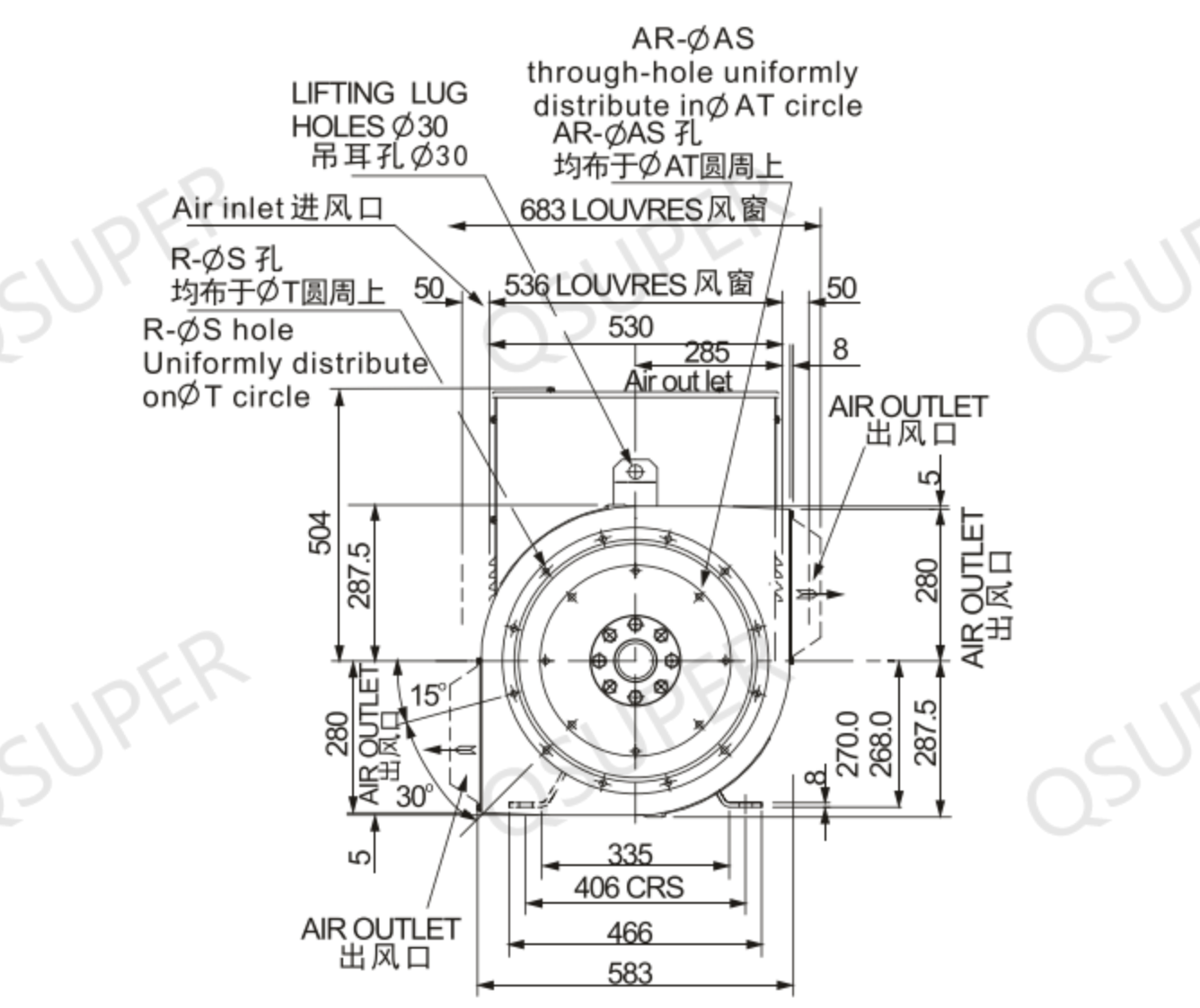
双轴承 DOUBLE BEARING



DIMENSION 尺寸(mm)				
型号 Model	A	B	C	C of G
QS274C	905	842	215	420
QS274D	905	842	215	430
QS274E	1020	957	330	445
QS274F	1020	957	330	475
QS274G	1070	1007	380	490
QS274H	1110	1047	420	510

FLANGE 法兰式过渡接管 (mm)					
S.A.E.NO.	R	S	T	W	X
1	12	12.7	530.2	511.1	553
2	12	11	466.7	447.6	495
3	12	11	428.6	409.5	451

SHIPMENT DATA 运输数据				
型号 Model	N.W(kg)	G.W(kg)	LXWXH(mm)	
QS274C	395	435	980X650X975	
QS274D	420	460	980X650X975	
QS274E	470	510	1080X650X975	
QS274F	510	550	1080X650X975	
QS274G	560	600	1110X650X975	
QS274H	610	650	1160X650X980	



FLANGE 法兰式过渡接管 (mm)								
S.A.E.NO.	A	B	C	D	R	S	T	W
1	1063	1000	525	202	12	12.7	530.2	511.1
2	1063	1000	525	202	12	11	466.7	447.6
3	1086.5	1023.5	548.5	225.5	12	11	428.6	409.5

DISC COUPLING 盘片式联轴器 (mm)					
S.A.E.NO.	AN	AR	AS	AT	V
11.5	39.68	8	11	333.3	352.3
14	25.40	8	13.5	438.2	466.6

SAE NO SELECTOR CHOWT 驱动片和过渡法兰配套表					
	274C~H			274J/K	
	SAE 10	SAE 11.5	SAE 14	SAE 11.5	SAE 14
SAE 0					
SAE 1		•		•	•
SAE 2	•	•		•	•
SAE 3	•	•		•	•